



For more information visit
RecoverGateway.org
or call 877-505-HOPE (4673)

55 E. Jackson Blvd., Ste. 1500
Chicago, IL 60604
P: 312-663-1130 | F: 312-663-0504
RecoverGateway.org



Commitment to Quality

2017 Annual Report

Table of Contents

Letter from the Chairman	4	Why We Do What We Do	36
Letter from the CEO	5	Gateway Leadership	38
Mission and Vision	7	Gateway Locations	39

Community Division

2017 Demographic Data	10	Patient Story - Jaime Smith, Recovery Advocate and Alumnus of Gateway Foundation	18
Client Engagement and Satisfaction	12	Gateway Launches #GatewayGiving	19
Gateway Rebrands: New Look, Enhancing our Mission	14	Now Open! New facilities in Carbondale, Gurnee, Joliet and Springfield	19
Gateway Excited to Announce New Mobile App	16	Gateway Partners with DASA to Fight the Opioid Crisis	20
Gateway Successfully Achieves Accreditation for Another Three Years	17	New Naloxone Protocol at Springfield	23
DASA Quality Indicators	17		

Corrections Division

2017 Demographic Data	26	Gateway Chosen as New Jersey Statewide Vendor	31
Client Engagement and Satisfaction	28	Committed to Trauma Informed Treatment	33
TAAP Names Award After Gateway's Own Frank Davis	30	Gateway Leads the Way in Corrections-Based Medication Assisted Treatment	34
Welcome to Dallas County Judicial Treatment Program	31		





Letter from the Chairman

I am so very pleased to introduce this latest issue of the Annual Report for Gateway. Clearly, this report shows the continued success of our Gateway team to meet our mission and achieve the vision in providing care for an ever increasing number of clients. The continued success of our diversification into growing our care for private pay clients along with our ongoing care for publicly funded clients has been tremendous. Our long term plans are to maintain this growth in our Community services area. Our Corrections business is truly recognized in that marketplace as a leader with its success, care, and growth; addressing the needs of those clients in the penal system and those who are looking to leave incarceration and reenter society as a recovering member.

There are some key attributes that you will see recognized in this Annual Report that demonstrate and are indicative of the Gateway we all know and love.

The first attribute is the excellence, determination, and strength of our Gateway workforce, the key element of success – our people!

The second attribute you will see is the high and ever increasing quality and success of care which our Gateway team is able to achieve in providing counseling and treatment. This attribute was once again recognized during an extremely successful Joint Commission review and certification in addition to the wide variety of quality targets achieved in all our operations.

The third attribute is how Gateway continues to build on its overall financial strength each and every year: making significant investments back into our business to achieve our mission; insuring that Gateway will always have the financial strength to weather the ever changing demands of our funders, payers, and business partners; and maintaining the long term financial stability to grow as a significant participant in substance use disorder treatment in our country.

On behalf of the Board of Directors of the Gateway Foundation, I would like to congratulate Gateway on another very successful performance in providing the highest quality of care to our clients and in achieving the key targets established for our continued success and growth.

Warren Harrington
Chairman
Gateway Foundation Board of Directors



Letter from the CEO

Dear Gateway Team, Supporters and Friends,

As FY2017 comes to a close and we enter our 50th year of operations, allow me to share the many accomplishments of our organization with the hope that you will feel as proud as I do to be a part of this team and the impact we have on thousands of lives every year. As you read about these, please know that I am acutely aware that these outcomes are only possible because of the work done every day by our team of professionals. At the EMT and Board of Directors level, we know that without the best team, Gateway can never reach its true potential and I thank the more than 1,300 employees who make our mission of changing lives a reality. This past year Gateway launched the “Total Rewards Program”, increasing total compensation and benefits by \$8.5M because we are committed to investing in our greatest asset – our workforce. Additionally two key leadership positions have been added that expand our reach into key strategic areas including health & hospital systems, government programs, community networks and Gateway Alumni.

Given that there are thousands of people in Illinois and all throughout the US who are in great need of our evidenced-based interventions, growth continues to be a driving force for our organization. In FY17, we opened outpatient programs in Springfield, Gurnee

and Joliet as well as a recovery home for boys in Carbondale to meet the growing needs of these communities. In the same vein, Gateway is pleased to be opening a comprehensive treatment program in Jacksonville in May of 2018. This new site will offer residential and outpatient treatment with stable recovery housing. Gateway was honored to receive funding through the State Targeted Response efforts to partner with Emergency Departments in Illinois for coordinated case management and to provide medication assisted treatment to individuals exiting several county jails. Our Corrections Division was selected to provide services in three states in this year alone – New Jersey, Texas, and Michigan. All of these awards are different and speak to the strength of our Corrections Division in its ability to provide comprehensive supports throughout the full continuum of correctional settings.

Growth and a strong workforce can only flourish with a continued investment in clinical excellence. We constantly strive to improve the quality of our services and to learn from our clients, experiences, and the treatment field at-large. Gateway received a full, 3-year accreditation award from the Joint Commission in 2017, testifying to our excellence. Gateway has also been recognized as an industry

leader by both DASA and Press Ganey, a national outcomes company, for our superior results in quality care metrics and client satisfaction ratings.

Gateway continues to lead the charge in addiction medicine, employing new technologies and focusing every business decision on an unrelenting pledge to quality treatment for those suffering with substance use disorders. With the implementation of Netsmart and the recovery app “MyStrength”, we will gain clinical insight and further improve outcomes in recovery. We have expanded our clinical practice into telemedicine, dual diagnosis treatment, MAT, and 24-hour admissions; all designed to fulfill our vision to be the nation’s premier treatment provider for substance use disorders and mental health treatment for all who need it.

I am excited and honored to be Gateway’s CEO as it celebrates its 50th anniversary which honors the past and marks the start of a future full of growth, innovation and strength. Thank you to all!

Dr. Thomas P. Britton
President & CEO
Gateway Foundation



For nearly 50 years, Gateway Foundation has provided life-changing treatment for individuals with substance use disorders and co-occurring mental health conditions. Since 1968, we have cared for nearly 650,000 men, women, and adolescents. Gateway is the largest independent, not-for-profit treatment provider in the country -- accepting both private insurance and government payers. Our programs are inclusive to everyone, regardless of race, ethnicity, sexual orientation or gender identity.

Subscribing to an evidence-based approach that is regarded as the contemporary industry standard, Gateway administers specialized programs driven by clinical expertise, professional research, and continued innovation. We support initiatives that raise awareness of this debilitating disease, while empowering more people to begin again, living free of drugs and alcohol. Our methods are cutting edge, but our goal is simple: to restore spirits and make lives whole.

The Gateway Mission

Gateway Foundation is a national, non-profit organization committed to reducing substance abuse and co-occurring mental health problems through effective and efficient treatment programs.

The Gateway Vision

Gateway's vision is to be the nation's leading treatment provider, helping to create access through affordable, high quality healthcare for substance abuse and mental health treatment for all who need it.



Community Division

Basic and Intensive Outpatient

Day Treatment

Residential/Inpatient

Residential Co-Occurring Disorder (Mental Health & SUD) Treatment

Recovery Home

Adolescent Residential Treatment

Adolescent Recovery Housing

Aftercare and Alumni

Specialized Residential Treatment for Young Adults

Medication Assisted Treatment

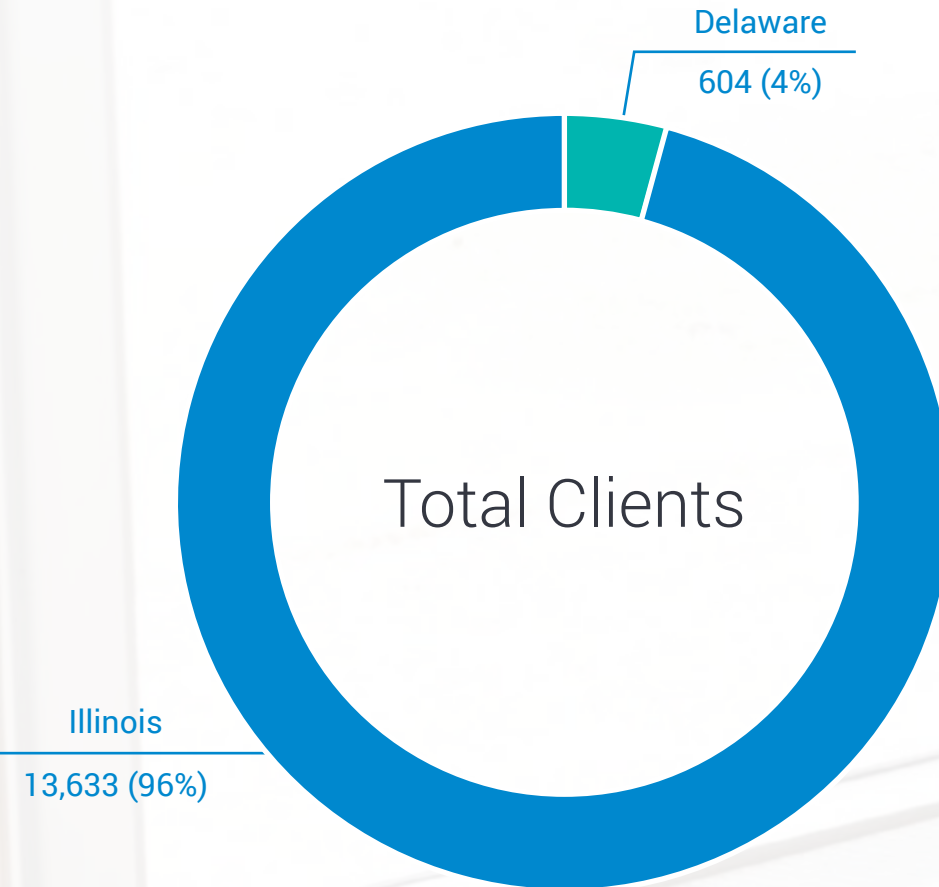
Trauma Informed Care and Trauma Interventions

Gender Specific Treatment for Adolescents and Adults

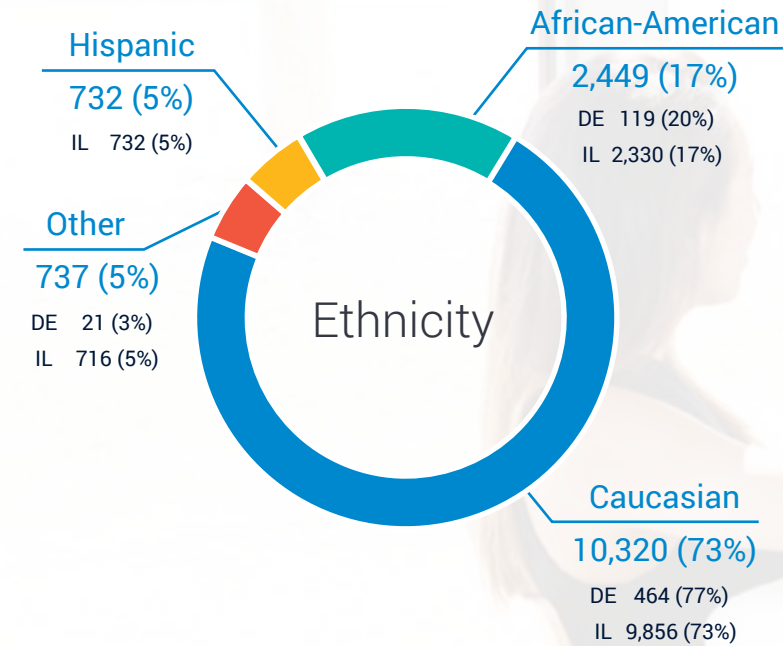
Demographic Data

TOTAL CLIENTS ADMITTED IN 2017: 14,237

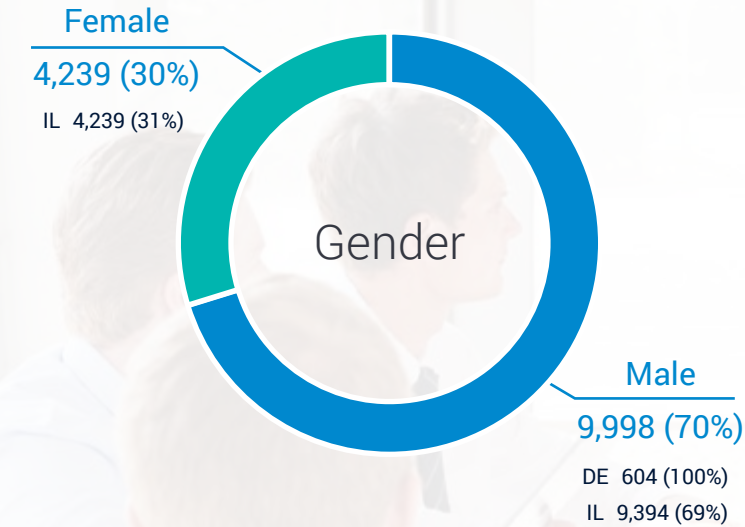
Total Clients



Ethnicity



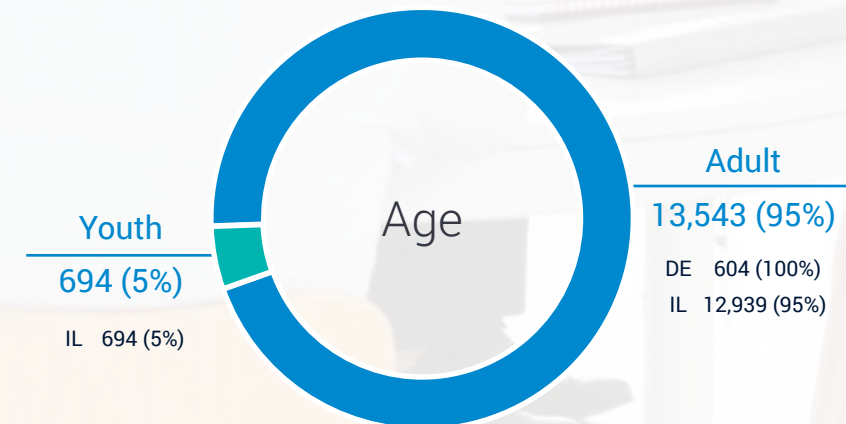
Gender



Program Setting



Age



Client Engagement and Satisfaction

RESIDENTIAL

RESIDENTIAL TREATMENT

92
out of
100

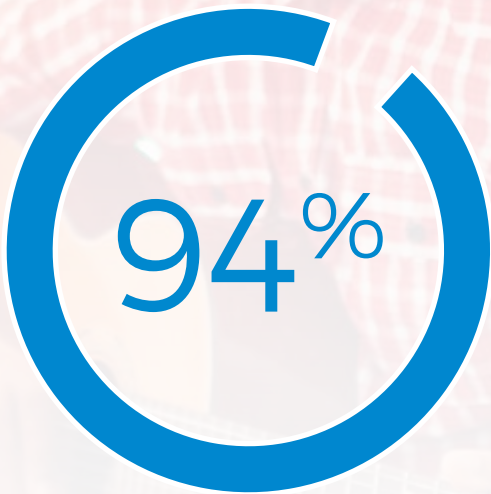
Overall client rating of Gateway's residential treatment programs

RESIDENTIAL COUNSELORS

94
out of
100

Overall client rating of Gateway's residential counselors

LIKELY TO RECOMMEND



of residential clients indicated they would recommend Gateway to others

OUTPATIENT

OUTPATIENT TREATMENT

96
out of
100

Overall client rating of Gateway's outpatient treatment programs

OUTPATIENT COUNSELORS

95
out of
100

Overall client rating of Gateway's outpatient counselors

LIKELY TO RECOMMEND



of outpatient clients indicated they would recommend Gateway to others

Gateway Rebrands: New Look, Enhancing our Mission



In the summer of 2017, Gateway introduced a re-branding project to create a new look and feel that reflects Gateway's mission and values: innovation, excellence, and approachability.

The Gateway re-brand is a launching board for a new campaign to carry the Gateway mission into the marketplace and on the minds of clinicians, families and individuals seeking treatment. The clean, modern look and feel defines Gateway's presence with a completely redesigned website, web and social media presence, marketing and advertising collateral.

discover you

Our new brand tagline speaks to our purpose and what drives each and every one of us to do our best work every day. Discover you is all about the people that we treat. Discover you provides hope to see beyond addiction, to find the unique person in you. It speaks to our treatment approach, which is not about judgment or shame, but rather about providing clients with the skills they need to not only discover who they are but help them manage their recovery going forward.

The renewed brand and taglines are incorporated by all Gateway staff so that everyone in the company, from the outreach team to the call center, conveys Gateway's offerings and benefits to clients, clinicians and families in accordance with our enduring mission, vision and values.

Gateway Excited to Announce New Mobile App

Gateway is excited to capitalize on the opportunities provided by mobile phone technology as a complement to our treatment model. In 2017, the FDA approved mobile apps to treat addiction to certain substances and early studies have demonstrated positive outcomes. Physicians and other health care providers, insurance carriers, and healthcare systems have integrated mobile apps into their care models and are promoting their use.



We are happy to announce that we will be partnering with myStrength in the upcoming year to provide clients with additional recovery support during and following treatment at Gateway's residential and outpatient programs. myStrength is a digital mental health platform that provides access to evidence-based resources for behavioral health and overall wellbeing. The myStrength platform features assessments; interventions; interactive applications; multi-condition trackers; and, mind, body and spirit resources.

We believe myStrength will allow clients a convenient way to stay connected to, and even extend, their treatment once they have completed their care episode. It is a highly convenient way to track data, obtain information, and set reminders. Ultimately, it empowers clients to have control over their wellbeing and is an additional support in the recovery process. We look forward to adding this new technology to our treatment portfolio and the potential it holds for the clients we serve.



Gateway Successfully Achieves Accreditation for Another Three Years

Gateway is committed to providing high caliber treatment to all individuals in its care and believes accreditation is a sign of our dedication to:

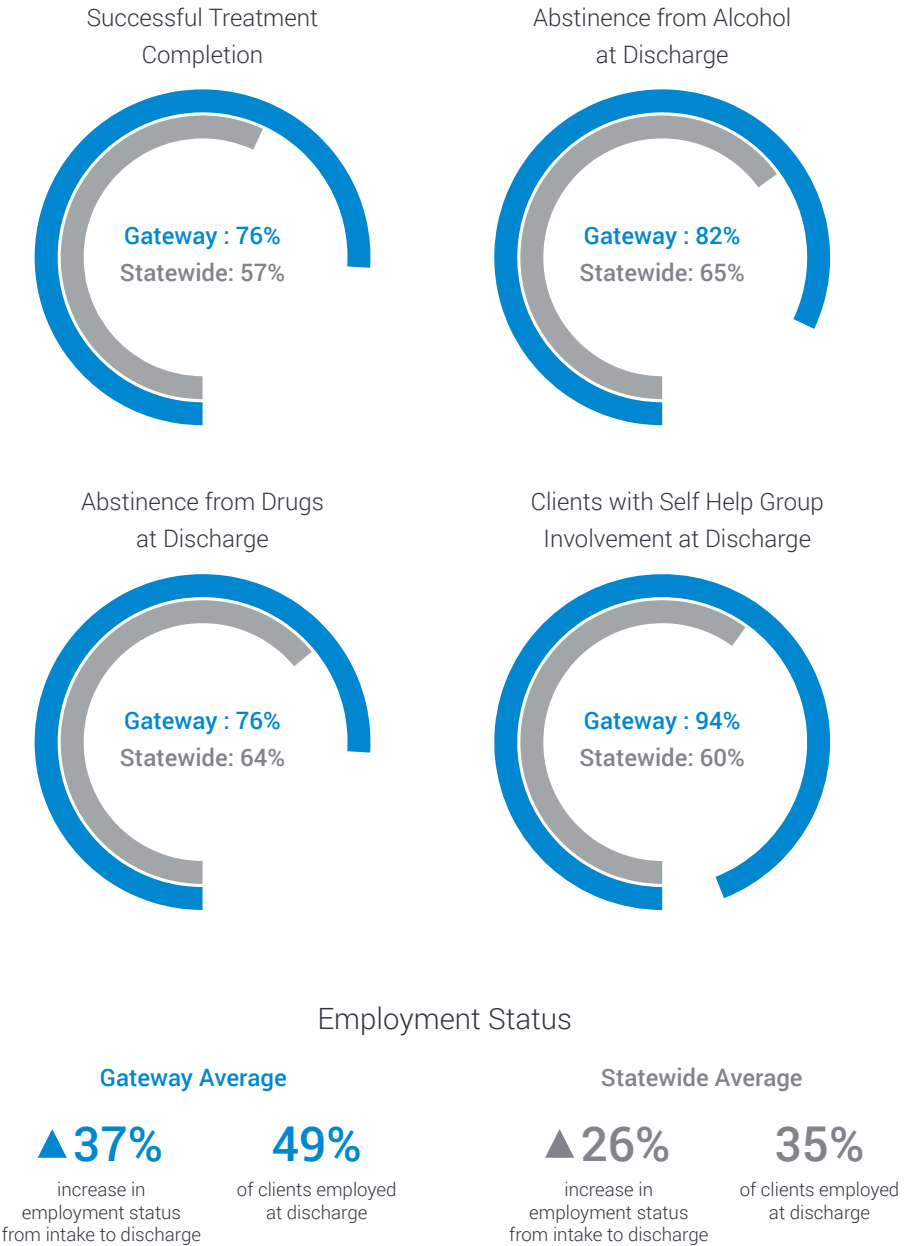
- Being accountable for the quality of our services
- Abiding by a set of rigorous standards
- Embracing performance improvement
- Employing sound business practices
- Providing a high quality of care

All of our Community Service Division treatment programs as well as our Corrections Division's St. Louis Outpatient treatment program are accredited by the Joint Commission under the Behavioral Health standards. In March 2017, the Joint Commission granted another three year accreditation to Gateway after a highly successful survey that examined over 200 standards and approximately 1,000 separate elements of performance. In fact, one of the Joint Commission surveyors stated that Gateway's survey results were outstanding in comparison to other organizations.

Gateway's Corrections programs are also obtaining accreditation, signaling our firm belief that superior treatment can be achieved in correctional treatment settings. Gateway's in-prison treatment programs in Wyoming were surveyed by CARF International and earned a three year accreditation. Our in-custody treatment programs for the New Jersey Department of Corrections will also undergo a CARF accreditation survey.

We are proud of the Gateway staff for embracing a rigorous accreditation process and for their dedication to continuous analysis and evolvement in order to provide safe, effective, and unparalleled services for our clients.

DASA Quality Indicators



Patient Story - Jaime Smith, Recovery Advocate and Alumnus of Gateway Foundation

There is a thief hiding in the shadows of today's suburban lifestyles. It's called addiction, and it is stealing the identities, families, careers and lives of people who might otherwise appear to "have it all together."

You've heard the national clamor about opioid addiction. I lived its horrors, although my story didn't start in the proverbial dark alley that is often associated with substance use. It began in my upscale suburban home in Champaign, Ill. and nearly ended one dark day as I lay lifeless on the floor following an overdose.

Fortunately, I'm on the upside of my addiction journey thanks to a supportive family and the right professional help. But that's not the case for so many of those stigmatized by shame and guilt, and unwilling to step out of the shadows and own their story. That's why I have become resolute in my mission to offer transparency and hope as a recovery advocate. In truth, I receive several hundred messages daily from substance users wanting to break the cycle of addiction, and most are living the same suburban drug dependence nightmare.

My addiction didn't happen overnight; it started with a few "innocent pills." From the outside, there was no reason to think something like this could happen to me or my family. We were the all-American picture—four beautiful children, an upper-class lifestyle and desirable careers.

Yet, no life is devoid of pain, and a family tragedy coupled with a move to a small town changed our family dynamics. As life stressors mounted, the

undercurrents of existing—but untreated—anxiety and depression began to surface in my life. Neighbors noticed the change and tried to "help" by introducing me to such prescription drugs as Hydrocodone, Oxycodone, Percocet and Oxycontin, which I took in combination with my own Zoloft prescription. We formed a gang of suburban pill-popping moms, maintaining a secret lifestyle for about two years, until my dependence spiraled out of control. Pretty soon, I moved on to heroin and cocaine, quit my job, left my family and became consumed with how I would get my next high.

Although I hit rock bottom, there was still hope. An introduction to Gateway Alcohol and Drug Treatment Center in Springfield, Ill. and the support of a loving family helped keep me from becoming another statistic. Professional counselors—several with whom I'm still in contact today —taught me about my disease, helped me put it in remission and live in recovery.

Powerful group therapy sessions underscored the reality that I was not alone. Equally important, Gateway brought my husband and children into the broader care plan, equipping them with the resources and tools they needed to support me and claim their own victory through this struggle.

There is life after addiction. I want others to know that truth. It's what motivates me to share my story over and over again. The first step is acknowledging you need help. The next step is getting the right help.



Gateway Launches #GatewayGiving

As an industry leader in substance use disorder treatment and recovery, Gateway has transformed the lives of over 1 million people. We have brought families closer, provided support to those in their greatest time of need and been a voice for the voiceless in our communities. Regrettably, now more than ever, compassionate and science-driven care is needed to address what is seen as the worst drug epidemic in our nation's history. Implementing advanced technologies, promoting continuous learning, incorporating cutting-edge therapies, and capitalizing on the synergies among our sites and Divisions are just a few of the initiatives that will redefine the capabilities of our organization.

Please stand with Gateway by making a donation to our campaign so we may continue to combat this epidemic and save lives.

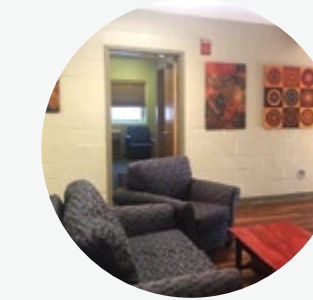
To make a tax-deductible donation

BY MAIL:
Gateway Foundation
Attn: Kellie Romany
55 E. Jackson, Suite 1500
Chicago, IL 60604

ONLINE:
Visit Campaign.recovergateway.org

Now Open!

The 2017 Fiscal Year was one of growth and commitment to serving our communities.

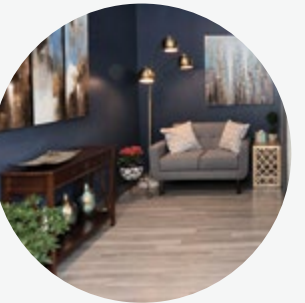


Carbondale, IL

Gateway expanded services in Carbondale to include a boy's recovery home in January 2017. The recovery home provides a productive atmosphere for youth boys who may not have a safe place to return to after completing residential treatment.

Gurnee, IL

Gateway opened an outpatient treatment center in Gurnee in June 2017. The Center offers a co-ed intensive outpatient program for adults and features flexible morning and evening schedules so treatment does not interfere with other daily commitments.



Joliet, IL

In January 2017, Gateway opened a new treatment center in Joliet. The Center offers co-ed intensive outpatient and aftercare programs for adults. The intensive outpatient program allows individuals to remain in close proximity to their loved ones and support network while receiving the treatment they need.



Springfield, IL

Also in 2017, Gateway was pleased to expand its services to an additional location in Springfield, IL. The Springfield Outpatient Treatment Center has space for Medication-Assisted Treatment, group and individual treatment sessions, and room for clients to engage in social activities with their peers in recovery.



Gateway Partners with DASA to Fight the Opioid Crisis

Drug overdose, particularly from opioid use, is the leading cause of accidental death in the U.S., killing more people than car accidents, falls, or guns. Via the 21st Century Cures Act, Congress has made funding available to the states to expand access to opioid treatment programs.

Gateway is proud to be on the front lines in the fight against opioids and is honored to partner with the Illinois Department of Alcoholism and Substance Abuse (DASA) on two programs to address the opioid crisis in Illinois.

Hospital Emergency Department-Based Services

The Hospital Emergency Department-Based Services Program assists emergency departments, which have seen a large increase in opioid related admissions, to address the myriad needs of individuals presenting at the emergency department with opioid involvement. Gateway's licensed clinicians are located in the emergency department and offer brief screening, education, risk reduction counseling, placement, and referral.

Our Engagement Specialists and Recovery Coaches help those affected by opiate use disorder make informed decisions about what treatment options are most appropriate for their specific needs and provide a "warm handoff" to continuing care in the community. With a network of over 50 providers, we are able match patients to a community based provider with available capacity and that accept the patient's insurance, thereby reducing common barriers to treatment engagement.

Pre- and Post- Release Medication Assisted Treatment for Offenders

Pre- and Post- Release Medication Assisted Treatment for Offenders provides access to behavioral health and Medication Assisted Treatment (MAT), specifically Vivitrol, for individuals exiting an Illinois County Jail in areas of high need. Incorporating MAT into prison-based treatment programs prior to an individual's release has the potential to make a significant impact in decreasing the risk of opiate overdose and overdose death, which is extremely high in the weeks immediately following release from incarceration. It also decreases the likelihood of relapse and recidivism.

Gateway works with the Macon County Jail (Decatur, IL) and Sangamon County Jail (Springfield, IL) to provide Vivitrol prior to the individual's release as well as pre-release case management and care coordination. Post-release, clients are able to continue to receive Vivitrol, as indicated, and participate in ongoing case coordination. To date 169 individuals have requested the MAT program.





New Naloxone Protocol at Springfield

After experiencing the tragic overdose death of a young client on a day pass, Gateway identified an immediate need to equip clients with lifesaving opioid reversal drugs. A multidisciplinary team of Gateway staff developed a protocol to provide Naloxone to clients with a diagnosed opioid use disorder. Naloxone, known under the brand names of Narcan® and Evzio®, blocks or reverses the effects of opioids and can be used to treat an opioid overdose in an emergency situation. All Gateway clients with an opioid use disorder are provided with either Narcan® or Evzio® prior to leaving the facility, whether they are leaving on a day pass or discharging from the program.

At intake, clients with an opioid use disorder are provided with education on opioid reversal drugs and are informed that either Narcan® or Evzio® will be ordered for them. Clients are able to choose which medication they prefer, taking into account insurance coverage and preferred route of administration. Clients are trained on how to administer the medication and work with the nursing staff to demonstrate efficiency in using it. Clients are strongly encouraged to have the reversal medication with them at all times in case they ever come across another person who may need it. Family members are also educated on the benefits of carrying Narcan® or Evzio® and how to access and administer these medications.

Corrections Division

In-Custody Residential and Outpatient Treatment

Therapeutic Communities

Co-Occurring Treatment

Trauma Informed Care and Trauma Interventions

Matrix Model

Medication Assisted Treatment

Veteran's Programming

Peer Recovery Support Services

Case Management

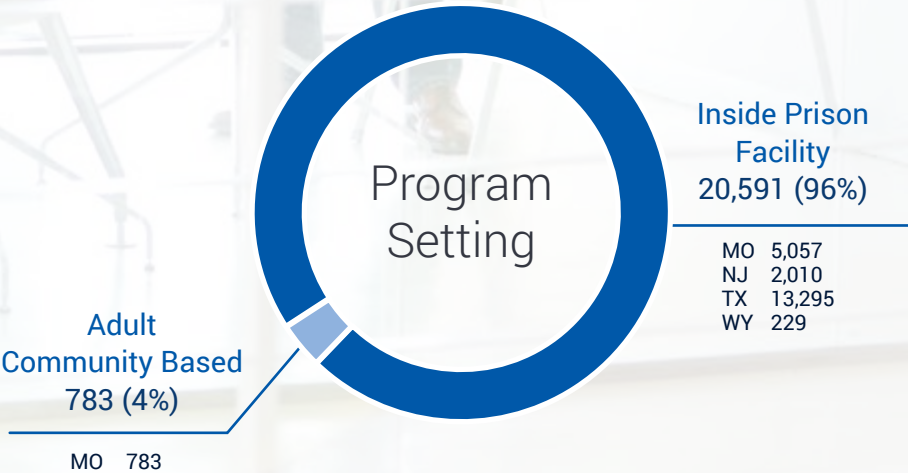
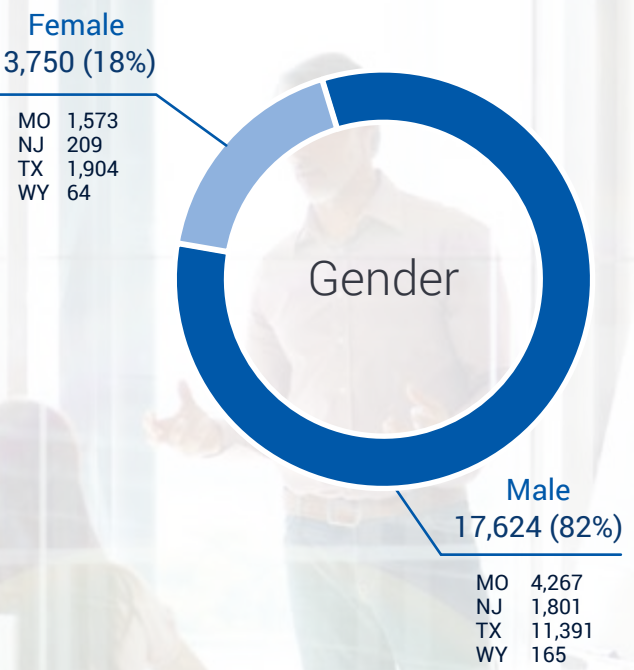
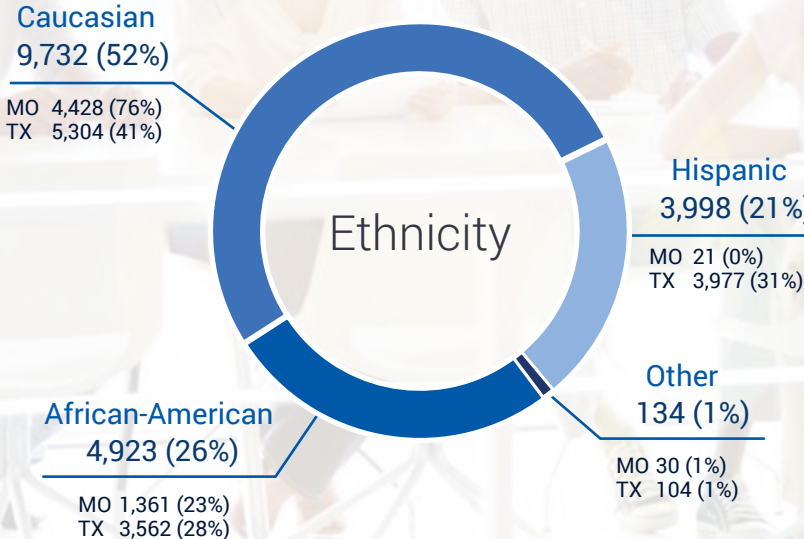
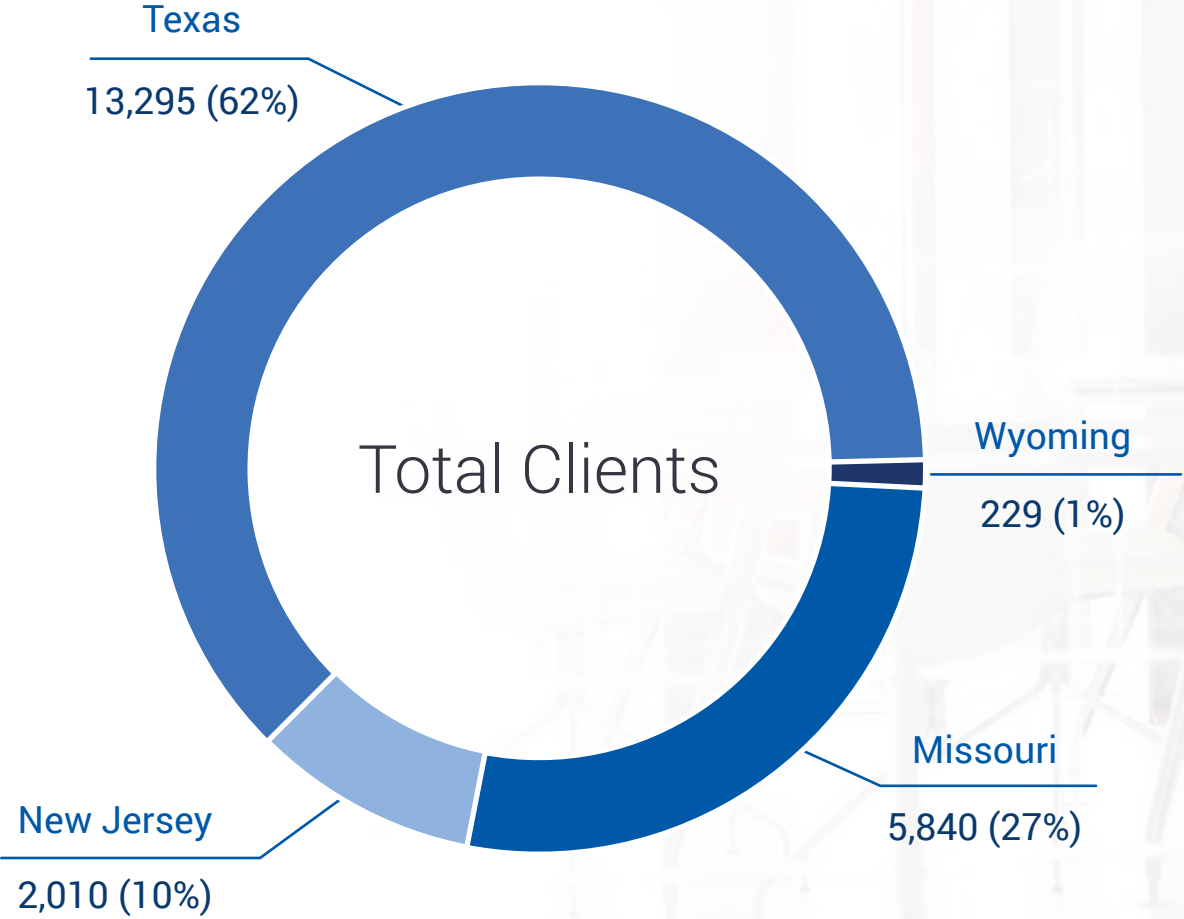
Re-Entry Services

Supervision and Facility Management



Demographic Data

TOTAL CLIENTS ADMITTED IN 2017: 21,374



Caucasian
9,732 (52%)

State	Count	Percentage
MO	4,428	76%
TX	5,304	41%

Hispanic
3,998 (21%)

State	Count	Percentage
MO	21	0%
TX	3,977	31%

African-American
4,923 (26%)

State	Count	Percentage
MO	1,361	23%
TX	3,562	28%

Other
134 (1%)

State	Count	Percentage
MO	30	1%
TX	104	1%

Female
3,750 (18%)

State	Count
MO	1,573
NJ	209
TX	1,904
WY	64

Male
17,624 (82%)

State	Count
MO	4,267
NJ	1,801
TX	11,391
WY	165

Inside Prison Facility
20,591 (96%)

State	Count
MO	5,057
NJ	2,010
TX	13,295
WY	229

Adult Community Based
783 (4%)

State	Count
MO	783

Client Engagement and Satisfaction

PEER SUPPORT



89% of respondents felt supported by their peers

MO	90.21%	NJ	91.21%
TX	87.75%	WY	85.71%

TREATMENT PARTICIPATION



97% of respondents felt engaged in their treatment

MO	99.31%	NJ	97.29%
TX	98.23%	WY	94.95%

TREATMENT SATISFACTION



90% of respondents felt satisfied with their treatment

MO	88.86%	NJ	93.21%
TX	88.23%	WY	91.09%

COUNSELOR RAPPORT



96% of respondents felt a positive therapeutic alliance with their counselor

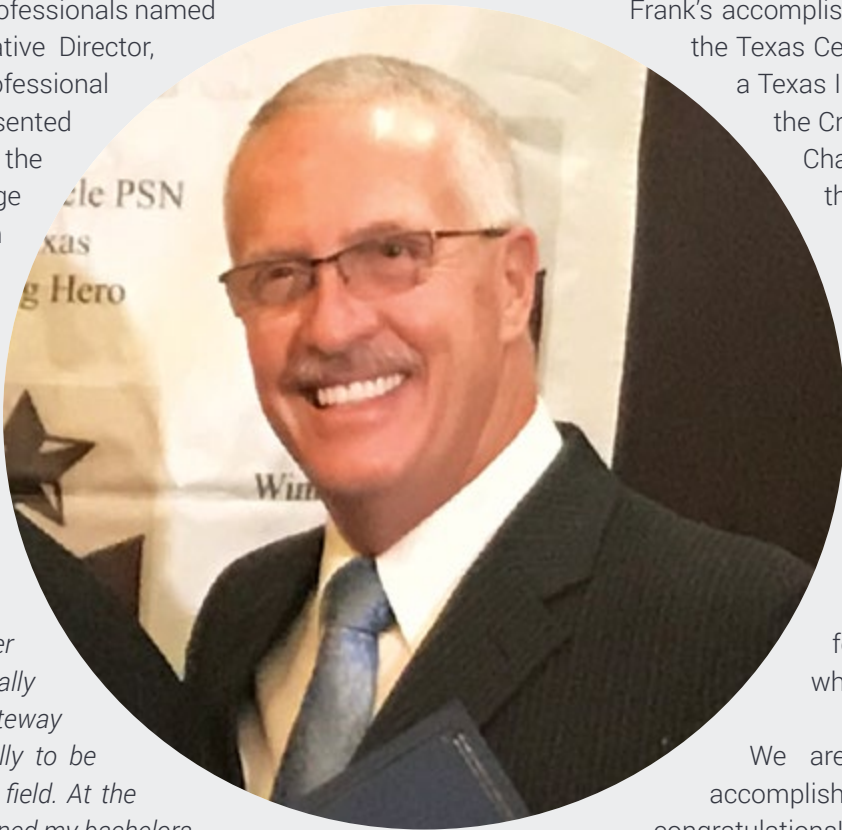
MO	95.58%	NJ	95.97%
TX	95.60%	WY	96.36%

TAAP Names Award After Gateway's Own Frank Davis

In 2017, the Texas Association of Addiction Professionals named an award after Gateway's Texas Administrative Director, Donald "Frank" Davis. The D. Frank Davis Professional and Community Outreach Award will be presented annually to clinicians who not only work in the trenches but also share their clinical knowledge in their community in helping people on an even larger scale.

Frank joined Gateway 2004. He is an Administrative Director for Gateway's Community Corrections programs in Texas and is also an adjunct faculty for San Antonio College. Frank remembers his early days joining Gateway:

"I quickly realized just how committed Gateway was to the mission of changing lives for the better and its commitment to its employees. I finally realized what it meant to be part of the Gateway family. I was encouraged to grow professionally to be able to better serve clients and promote in the field. At the encouragement of Gateway management I obtained my bachelors of science in addiction studies and went on to earn a Master's of Education with a focus in counseling. It has truly amazed me that the leadership of Gateway is so dedicated to providing quality services and its commitment to helping clients re-enter society and become productive tax payers, fathers, brothers, husbands, wives and neighbors."



Frank's accomplishments are numerous. He is the Chairman of the Texas Certification Board of Addiction Professionals, is a Texas IC&RC delegate and is the current Chairman of the Criminal Justice Credentialing Committee, is the Chairman of the Criminal Justice Committee for the Houston Recovery Initiative, and is Co-Chair for the Criminal Justice Committee of the Texas Recovery Initiative. In 2014, he was inducted into the Houston TAAP Chapter Hall of Fame. In 2016, he was awarded the Presidential Achievement Award by IC&RC and was awarded the William "Bill" Callahan award by NAADAC for commitment to the field of addiction treatment. He was selected as a recipient of the 2017 Unsung Hero award for his continued support of Winners Circle and his efforts to reduce barriers that have blocked formerly incarcerated individuals and/or those who desire positive change.

We are incredibly proud of Frank and all his accomplishments and extend him a heartfelt congratulations!

Welcome to Dallas County Judicial Treatment Program

Gateway continues to expand its successful Community Corrections supervision and treatment model. In January 2017, Gateway was awarded a contract to operate a 300-bed community corrections facility for the Dallas County Community Supervision and Corrections Department (DCCSCD). Gateway is responsible for facility operations and supervision as well as the delivery of a substance use disorder treatment program and a co-occurring disorder program.

In partnership with the DCCSCD, Gateway provides a Cognitive-Behavioral Substance Abuse Treatment program for male and female offenders. Clients participate in a 120 day Intensive Residential Treatment program followed by 60 days of Supportive Residential treatment. Our comprehensive, gender-responsive residential treatment program integrates group treatment and individual counseling, family meetings, educational modules, and outside support services.

Gateway also offers a specialized Dual Diagnosis Center (DDC) for individuals with a co-occurring substance use and mental health diagnosis. Clients in the DDC program are provided comprehensive Substance Use Disorder treatment services supplemented by mental health overlay services provided through Dallas Metrocare.

Both treatment programs focus on achieving the following:

- Development of skills and behaviors to enable substance-free and crime-free lives
- Elimination of destructive, anti-social behavior
- Development of non-threatening communication skills
- Appropriate and constructive expression of feelings and emotion management
- Acquisition of pro-social and life management skills
- Development of support systems to facilitate continuing growth and recovery

"People suffering from the disease of addiction deserve holistic and individualized treatment, whether they're in the community or incarcerated. With the Gateway Foundation at the helm of Mid-State, we will save lives, break the costly cycle of addiction, avoid recidivism and help countless people return as productive members of their families and our society."

New Jersey Governor Chris Christie

Gateway Chosen as New Jersey Statewide Vendor

Earlier this year, Gateway was honored to be chosen as the statewide vendor for the New Jersey Department of Corrections revamped in-prison substance use disorder treatment programs.

Under Governor Chris Christie's leadership, the New Jersey DOC opened a fully dedicated treatment prison at Mid-State Correctional Facility. This is the first prison in New Jersey to be completely dedicated to the treatment of Substance Use Disorders. The Mid-State program is licensed through the New Jersey Department of Mental Health and Addiction Services. Moving away from a one size fits all treatment model, treatment placement decisions are based upon comprehensive assessment and ASAM criteria. Level of care placement options include Long-Term and Short-Term Residential treatment, Intensive Outpatient treatment, and Outpatient treatment. Also included in Gateway's award is a substance use disorder treatment program for women at Edna Mahan, assessments at the Central Reception and Assignment Facility, statewide psychoeducational services for individuals in the general population as well as individuals housed in a Restrictive Housing Unit (i.e., segregated housing).

In addition to program licensure, Gateway will also obtain national accreditation for its programs in New Jersey.

Committed to Trauma Informed Treatment

Rates of Post-Traumatic Stress Disorder (PTSD) are extremely elevated among incarcerated women, ranging anywhere from 15% to 80%, with the vast majority experiencing both PTSD and a substance use disorder.

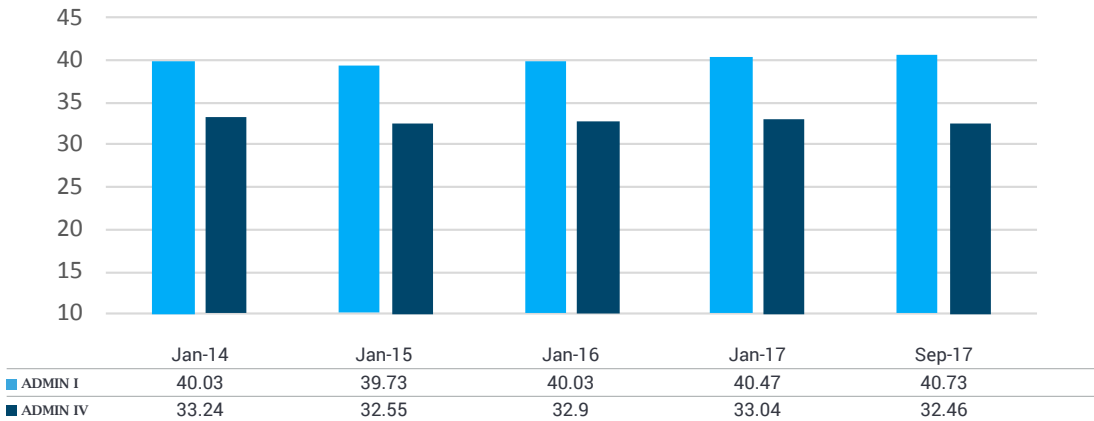
With this information in mind, Gateway's women's treatment programs in Missouri at Chillicothe Correctional Center and Women's Eastern Reception, Diagnostic and Correctional Center committed to becoming a trauma informed program and to providing trauma specific interventions. In 2015, clinicians were sent to train with international trauma expert, Dr. Stephanie Covington. Gateway's trained clinicians then trained the rest of the clinical team on two specific trauma curricula- *Healing Trauma* and *Beyond Trauma*. All staff members, regardless of role, are trained in the tenets of trauma informed care.

Every client is screened for possible PTSD utilizing the Texas Christian University Trauma form which is based on the PTSD Checklist- Civilian Version. Clients with high trauma scores are offered the opportunity to participate in a trauma specific intervention. Case management and consultation with the contracted mental health provider ensures a collaborative team approach.

The results have been astounding! Client feedback has been exceedingly positive as has been the overall reduction in PTSD symptoms.

"This class has helped me to deal with trauma that I hadn't dealt with, and with trauma I didn't know I had to deal with. Though I know I have a long way to go, I feel this class has prepared me to see warning signs for the future and has helped me to know there is help out there."

TRMAFORM: PTSD Symptom Severity
PTSD Score



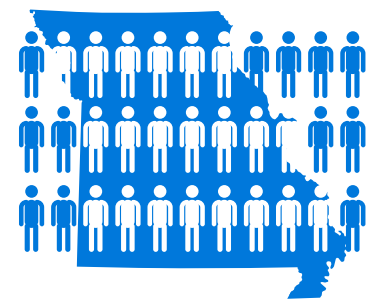
Gateway Leads the Way in Corrections-Based Medication Assisted Treatment

An abundance of research has demonstrated the positive effects of medication assisted treatment (MAT) in conjunction with behavioral therapy for individuals with substance use disorders. In 2013, together with the Missouri Department of Corrections and the Missouri Department of Mental Health, Gateway led the way in MAT by providing pre-and-post-release medication for individuals in an in-custody substance use disorder treatment program. Gateway continues to expand and refine the use of FDA approved medications to assist in the treatment of clients with substance use disorders in our Missouri programs.

During fiscal year 2017, after screening almost 3,000 clients, Gateway provided opioid relapse prevention medication, Vivitrol®, to 142 incarcerated clients at seven Missouri Department of Corrections institutions and to 128 clients post release. Gateway continues to work with Dr. Kevin Knight of Texas Christian University's Institute of Behavioral Research to evaluate which clients benefit most from this treatment intervention and to explore diversifying the medications offered to assist clients recovering from substance use disorders. Corrections agencies outside of Missouri, including the Illinois Department of Corrections and the U.S. Bureau of Justice Administration, have sought out Gateway's expertise regarding the inclusion of MAT for Corrections populations.

We continue to see outstanding outcomes in client engagement and retention in treatment of those who receive addiction medication as a component of holistic treatment and comprehensive reentry services both prior to and following release from the Missouri Department of Corrections. In 2017, 95% of clients who received MAT engaged in community based treatment upon release versus an average of 60% for non-MAT recipients. Impressively, 90% of the corrections involved clients served by Gateway's Reducing Recidivism-Medication Assisted Treatment program did not return to custody in an 18 month retrospective through 2016.

These notable results have led the Missouri legislature to increase funding for MAT for corrections involved individuals. In July 2017, Gateway will expand MAT services to all 10 institutions providing substance use disorder treatment in the Missouri Department of Corrections. The post-release catchment area will grow beyond the metro St. Louis and Kansas City areas to serve clients with the highest risk of relapse returning to any area in Missouri. Gateway also incorporates Peer Recovery Support Specialists across the full treatment continuum to further enhance engagement in ongoing treatment and community supports, a key indicator of long term recovery and reduced recidivism.



In Missouri during fiscal year 2017,
Gateway provided Vivitrol® to

142

incarcerated clients

128

post-release clients



Why We Do...

From Community Clients

"Gateway is a great place full of sincere people who take joy in helping others. My counselor's clear and unwavering commitment to me, my health, family, job and general well-being went above and beyond anything I could have expected, or even wished."

Damon

"I've been to several other treatment facilities through the years. The skill level and experience of the Gateway clinicians made this a game-changer in terms of my chances at long-term sobriety."

Grant

"The Gateway outpatient treatment program and staff have been a blessing to me and my family for several reasons...including the flexibility the program provides in the way it works with my schedule."

Louise

"I have gained self-confidence and self-esteem thanks to this program. I also have gained control of my depression and overall outlook on life. I'm ready to live now!"

Thomas

From Community Associates

"Gateway continues to evolve and embrace evidence-based and innovative approaches to treatment of patients experiencing substance use disorders. There is no one path to recovery, and Gateway will help each individual build a plan that will provide support and resources for their journey."

Michael

"It's rewarding to watch people transform from resistant, to embracing sobriety, to eventually becoming great speakers who offer hope to others for a lasting recovery."

Linda

"I am very proud to be a part of the Gateway Team! We go above and beyond to help our clients succeed. It's an awesome feeling watching a client make that turning point in their life."

Denise

"At Gateway, we strive every day to eradicate the stigma and shame of substance use through education and compassion."

Gerald

...What We Do

From Corrections Clients

Dear Staff of YMAC,

My son recently completed your program and is moving on in getting back to the business of living.

I wanted to take this opportunity to thank you for the work you are doing there. I thank you for your willingness to be on the front lines helping solve a problem that is harming our society. I thank you that you treated my son as an individual and worked to maintain his identity as a person. I wanted to thank you too, for the respectful way you treated us as parents. I can only imagine you have to answer the same questions day after day and the high emotions that are part of this experience.

Thank you for answering all our questions. Thank you for maintaining your calm and being kind when I was in tears. Thank you for doing that over and over and over again for every family you see. You are making a difference with every interaction you have. I wanted to thank you and encourage you in the work you are doing. You have a very difficult job and you are making a difference every day.

Keep up your good work and keep being mindful that every person in YMAC is special and important to someone.

Mother of a Gateway Corrections Client

"I want to thank you for extending me in the program and saving my life. It opened my eyes because looking back, I realize I would have gone back to using drugs again. I now have a job, my family back and I am able to be a part of my kids' lives."

Former Gateway Corrections Client

"Gateway treatment has opened my eyes to many problems I will face and has given me the tools to overcome them. I can now see issues before they come my way, I know how to respond in high risk areas of my recovery. Some of the classes I have taken will help me walk out these gates with my head held high. It's not because I am fixed, but because I know what to expect and I know what to do when I am faced with triggers and how to respond to people that want to help me back slide.

I know that I am going to make it this time out, because I want to change I am thankful for Gateway for all the information. [The] staff has opened my eyes to see I can do the right thing when time gets hard."

Gateway Corrections Client

BOARD OF DIRECTORS

FY2017

Glenn Huebner
CHAIRMAN

Amalesh Sanku
TREASURER

Warren Harrington
SECRETARY

Michael Anthony
Sidney Bradley
Richard L. Eichholz, Ph.D.
David Johnson
Patricia Jones
Arla Lach
Mary Cesare-Murphy, Ph.D.
France Pitera
David Onion
Elizabeth Ogilvie Simer
Andy Smith

FY2018

Warren Harrington
CHAIRMAN

Amalesh Sanku
TREASURER

France Pitera
SECRETARY

Michael Anthony
Sidney Bradley
Richard L. Eichholz, Ph.D.
Glenn Huebner
David Johnson
Arla Lach
Mary Cesare-Murphy, Ph.D.
David Onion
Elizabeth Ogilvie Simer
Andy Smith
Ivy Walker

EXECUTIVE TEAM

Dr. Thomas P. Britton
PRESIDENT & CEO

Marc Turner
DIVISION PRESIDENT
COMMUNITY SERVICES

Gregg Dockins
DIVISION PRESIDENT
CORRECTIONS

Dr. Teresa Garate
VICE PRESIDENT
STRATEGIC PARTNERSHIPS
AND ENGAGEMENT

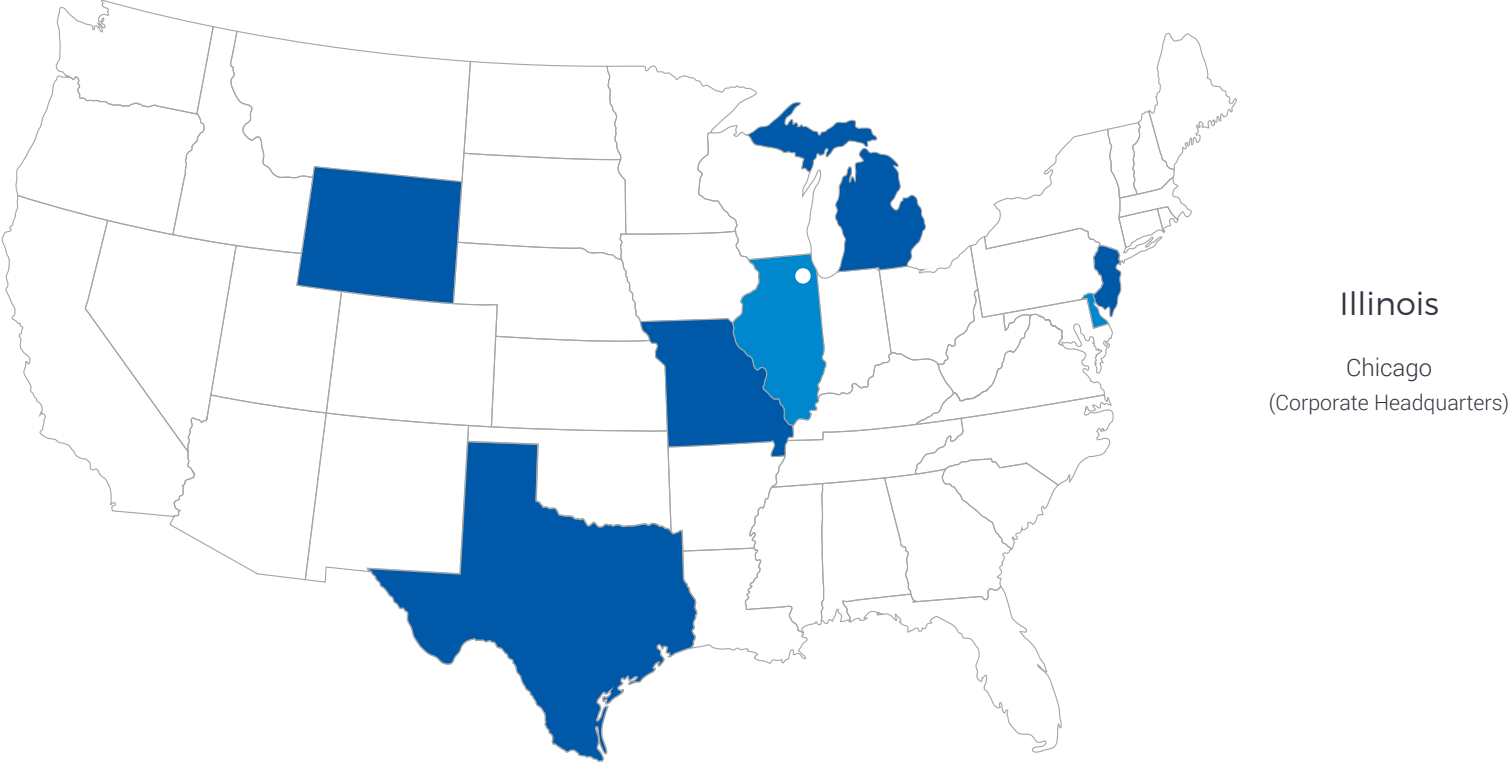
Dan Molitor
VICE PRESIDENT
INFORMATION SYSTEMS

Patricia Sanchez-Aitken
VICE PRESIDENT
HUMAN RESOURCES

Tomas Del Rio
CHIEF FINANCIAL OFFICER

Dr. Roueen Rafeyan
CHIEF MEDICAL OFFICER

GATEWAY LOCATIONS



Community Division

Illinois

Aurora
Carbondale
Caseyville
Chicago Independence
Chicago Kedzie
Chicago River North
Gurnee
Joliet
Lake Villa
Pekin
Springfield
Swansea

Delaware

Smyrna

Corrections Division

Michigan

Baraga
Detroit
Kincheloe
Marenisco
Marquette
Munising
Newberry
Ypsilanti

Missouri

Bonne Terre
Bowling Green
Chillicothe
Fordland
Kansas City
Maryville
St. Joseph
St. Louis
Vandalia

New Jersey

Annandale
Bridgeton
Clinton
Delmont
Newark
Trenton
Wrightstown
Yardville

Texas

Brownwood
Breckenridge
Burnet
Dallas
Dayton
Gatesville
Hondo
Houston
Humble
Huntsville
Kyle
Richmond
San Diego

Wyoming

Lusk
New Castle
Torrington